

# Chess at St. Mary's School

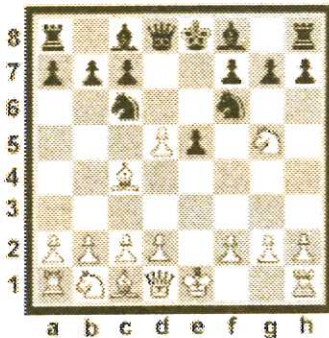
**Championship Chess** presents a systematic, fun way to build chess skills during chess instruction and while students play. Studies show that chess improves math, reading and problem-solving and our methods connect these academic benefits to our classes. Classes include instruction as well as chess play and guided analysis.

- ❖ **Day and Time:** Monday after school from **3:00 to 4:00 pm**
- ❖ **Dates:** The Winter session starts **December 2<sup>th</sup>, 2013**, ending **Feb 24<sup>th</sup>**  
(10 sessions, no class 12/23, 12/30 & 1/20)
- ❖ **Who can play:** Session is open to all students, both beginners and experienced, in 1<sup>st</sup> grade and above or to younger students if they already know how to play. **Note:** For the class to meet, we need at least 10 players **registered by email or phone, no later than November 25<sup>th</sup>**
- ❖ **Cost:** Winter Session **\$120.00** including instructional materials.
- ❖ **Payment Deadline:** Due by **November 25<sup>th</sup>** or a \$10 late fee will be added.
- ❖ **Registration/Payment:** Please clip and send in the registration form below with your check payable to: **Championship Chess of Greater Richmond** or pay online at [www.championshipchessRVA.net](http://www.championshipchessRVA.net) under the Register tab via paypal. We will confirm your payment and registration by email.

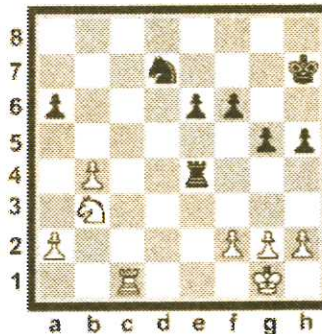
## Championship Chess Staff and Methods

Championship Chess Instructors utilize a complete curriculum introducing chess skills to beginners incrementally and improving players' skills and strategies in the opening, middle and endgame. Each player will receive a chess workbook.

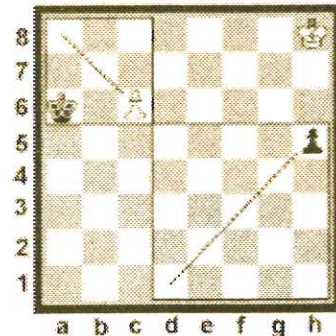
*Chess Openings:  
Two Knights Defense*



*Chess Tactics:  
White to Set a Pin*



*Endgame Strategies:  
Can White Draw?*



## UPCOMING CHESS EVENTS:

- **Bon Air Library** – free, all ages. 7:00–9:00 pm, 1st & 3rd Friday every month. Prizes. 9103 Rattlesnake Road, 23235
- **Maggie Walker Fall Scholastic**, Saturday, November 23<sup>rd</sup>, <http://www.vsches.org/>

**Contact Information:** Brian Garbera, 804-921-2410; ChessCoaching@comcast.net

## Chess Enrollment for Winter 2013-2014 at St. Mary's

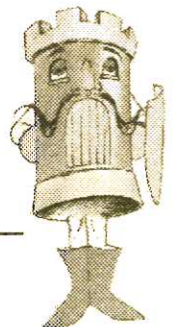
Child's Name: \_\_\_\_\_ Gr: \_\_\_\_\_ Teacher: \_\_\_\_\_

Parent/Guardian Name: \_\_\_\_\_

Home Phone: \_\_\_\_\_ Cell #: \_\_\_\_\_ e-mail: \_\_\_\_\_

\_\_\_\_\_ \$120 for all 10 classes including instructional materials

\_\_\_\_\_ \$10 late fee after November 25<sup>th</sup> deadline



Pay by **check** to **Championship Chess of Greater Richmond**, write "St. Mary's" at the bottom of the check and MAIL to: 13406 Mitford Drive, Midlothian, VA 23114, Attn: Brian Garbera **or** Pay online via paypal at [www.ChampionshipChessRVA.net](http://www.ChampionshipChessRVA.net) under the Register tab.